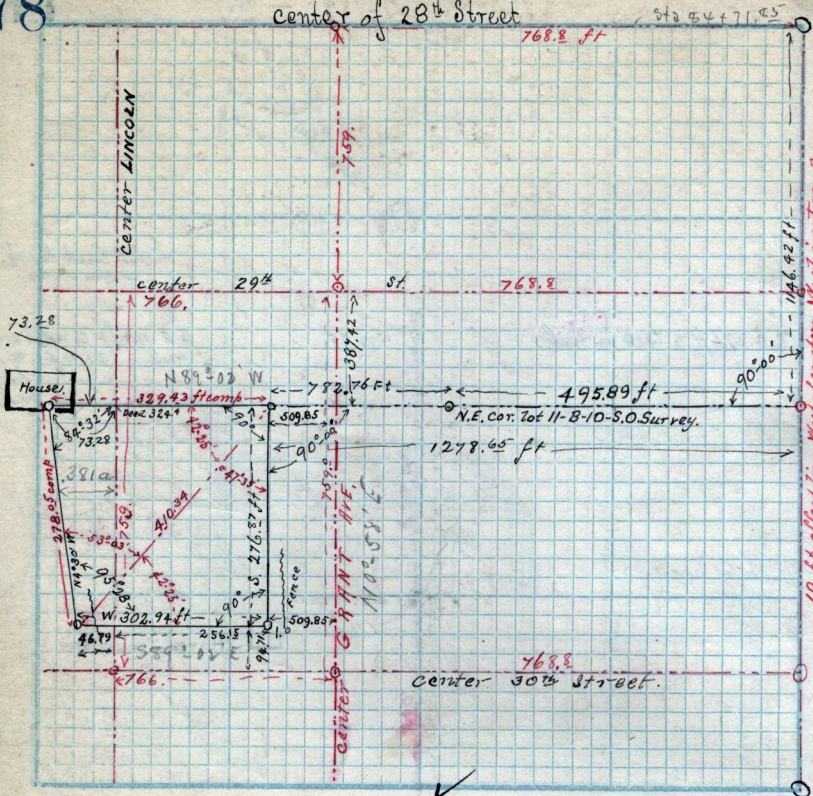


center of 28th Street



Scale: Chains per inch.

Survey March 24th 1890, for W.P. Jones (See description on page 77)

White, Transit, Ed. Wheeler, Ch. Koston } chainmen.

Notes by White

- N.E. cor. 7.9 ft. S. E. & W. fence
- " " 75 " E. from N. & S. line to N & S. fence, produced N
- S.E. " 1.0 ft. E. to N & S. fence.
- " " 74 ft. ^W to center slough
- S.W. cor. 9.5 ft. W. of fence. 176. ft. N. to center cr. from sewer,
- " " 271.5 ft. N. 4° 30' W. to house on line of property at a point 7
- W. of S.E. cor. house. 257. ft. N. of N.E. cor. of fence.
- 321.85 ft. N. of N.E. cor. to building 26.5 x 76.4 ft one
- high, at a point 6.45 ft. N. of S.E. cor. of building incl
- angles 94° 20' (?)